

感谢您购买本产品,请在使用前仔细阅读使用安装说明书,并妥善保管。

本使用安装说明书并非质量保证书,对印刷错误的更正,所述信息谬误的勘误,以及产品的改进,均由制造商随时做出解释,恕不预先通知,修正内容将编入再版使用安装说明书中。

使用注意事项

冷却机在没有加水的情况下严禁通电开机!

- ❗ 冷却机的安放位置应尽量选择通风良好、干燥的环境,远离其它热源。
- ❗ 机器后面的出风口距离障碍物 30cm 以上,两侧的入风口距离障碍物 10cm 以上。
- ❗ 冷却机在长期不用或运输时必须排空冷却水。
- ❗ 为保护发热器件,冷却机在水温较低时(约 10℃),散热风扇会暂停工作,而当水温回升到较高时(约 20℃),散热风扇将继续工作。

SIMPIE TROUBLESHOOTING

FAILURE	FAULT CAUSE	APPROACH
Machine turned on but unelectrified	Power cord is not plugged in place	Plug the power cord in place
	Fuse burnt-out	Replace the fuse inside the power interface which is in the back of machine
Flow alarm (panel red light) with water pipe directly connect to the outlet,inlet, there is no water flow	Water level in water tank is too low	Feed water and check the pipe leakage
When used with the device,flow alarm (panel red light),but a direct connection with the pipe outlet and inlet,there is water flowing but not alarming	Water level in water tank is too low	Feed water and check the pipe leakage
Ultra-high temperature	Chiller of poor ventilation	To improve the ventilation
	Excessive heat load	Reduce the heat load or to use other models
A normal boot,but the fan does not work	The water temperature below 20℃	A normal phenomenon,no processing
Switch on with alarming after adding water or changing water	Water drop in electric circuit	Natural drying or drying off cap
	Damaged pumps dry transfer	To replace or repair water pumps, prohibited anhydrous boot
Slow outfall drainage	The injection port is not open	Open the injection port

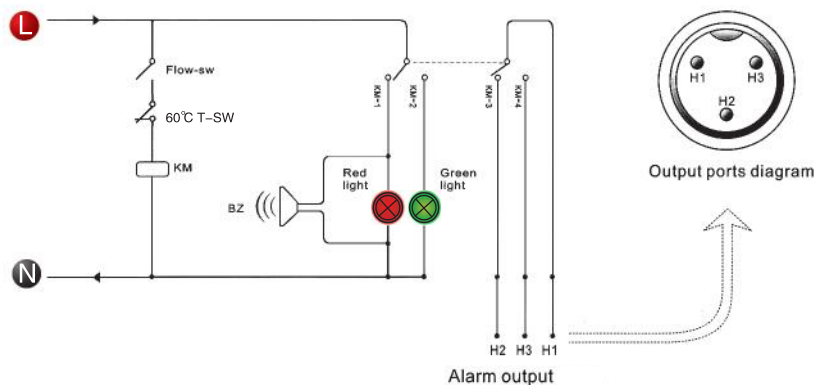
PACKING LIST

- 1.1 unit of industrial chiller.
- 2.1 copy of user manual.
- 3.1 pc of power cord.
- 4.1 pc of connection hose.
- 5.2 pcs of sealed hoop.
- 6.1 pc of alarm signal output plug.
- 7.1 pc of spare fuse.
(Held in the spare fuseholder of power socket.)



CAUTION: the appliance is not to be used by children or persons with reduced physical, sensory or metal capabilities, or lack of experience and knowledge, unless they have been given supervision or instruction, children being supervised not to play with the appliance.

ALARM CIRCUIT



MAINTENANCE

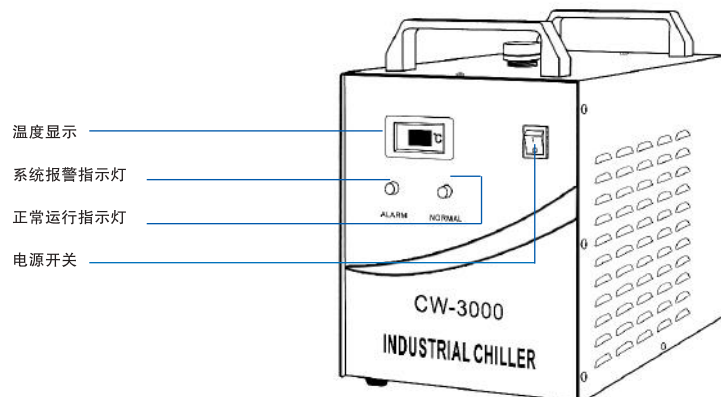
1. To ensure good heat dissipating, please open the lid to clean the dirt after the cooler used in long-term.
2. Working in cold north area, it is better to use noncorrosive antifreeze fluid.

SPECIFICATIONS

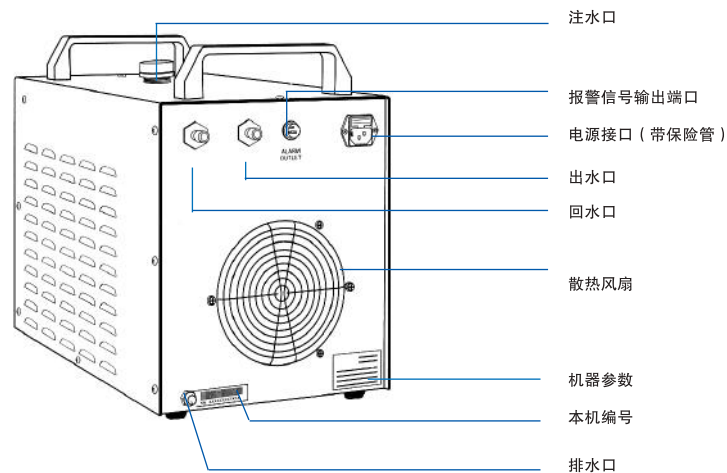
MODEL	CW-3000AG	CW-3000DG	CW-3000AF	CW-3000DF	CW-3000AK	CW-3000DK
Voltage	AC220 ~240V	AC100 ~120V	AC220 ~240V	AC100 ~120V	AC220 ~240V	AC100 ~120V
Frequency	50/60Hz					
Current	0.45A	0.9A	0.45A	0.9A	0.5A	1.0A
Cooling	50W/°C			60W/°C		
Capacity	9L					
Inlet and outlet hold	External ϕ 10mm brass connector	ϕ 8mm brass connector		ϕ 6mm speedy connector		
Max. Lift	10M			70M		
Max. Flow	10L/min			2L/min		
Protection	Flow alarm					
N.W	9.5Kg		12Kg			
G.W	12Kg		14.5Kg			
Dimensions	47*27*37*(L*W*H)					
Packing dimensions	59*39*48*(L*W*H)					

外形及部件名称

机身正面

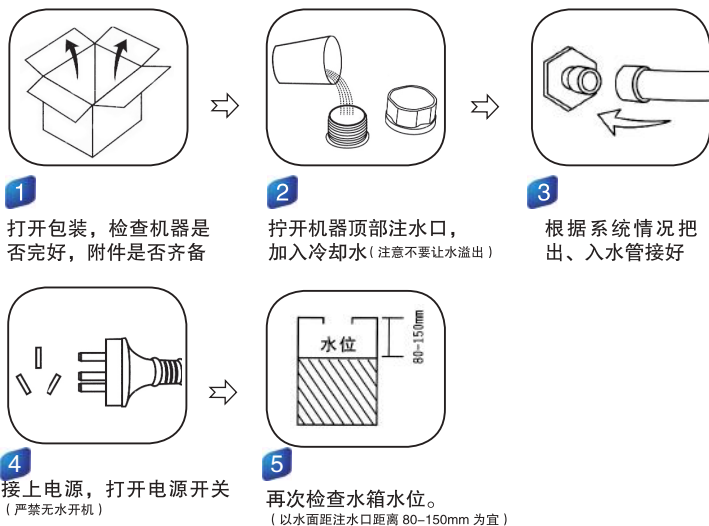


机身背面



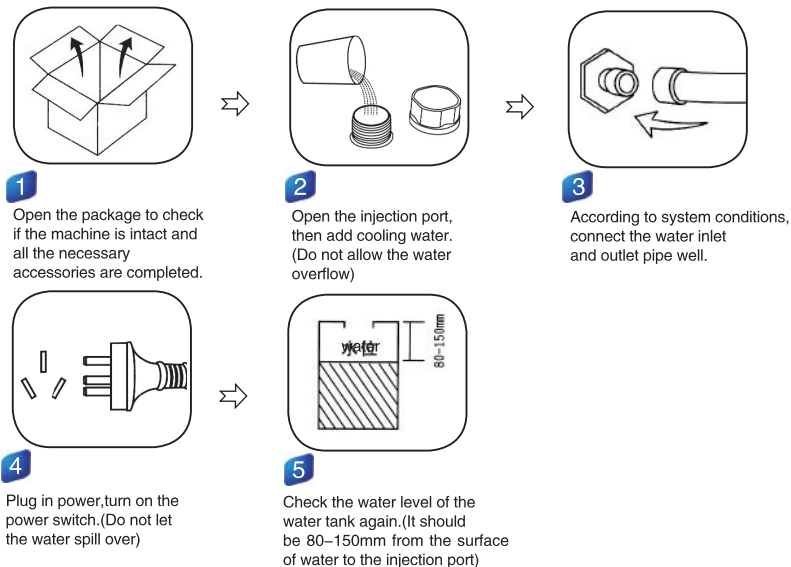
首次安装

工业冷却机安装使用非常简易，新机首次使用可以按以下步骤进行：



THE FIRST INSTALLATION

It is very simple to install this industrial cooling machine. The first time installation of the new machine can be carried out by following steps.



报警功能说明

冷却水循环回路报警原因与工作状态表

系统指示 工作状态	绿色 指示灯	红色 指示灯	蜂鸣器	输出端口 H1、H2	输出端口 H1、H3
系统工作正常	● 发光	⊗ 熄灭	⊗ 不发声	🔴 断路	🟢 导通
冷却水循环回路堵塞	⊗ 熄灭	● 发光	🔊 发声	🟢 导通	🔴 断路
冷却水温度超过60度	⊗ 熄灭	● 发光	🔊 发声	🟢 导通	🔴 断路
循环水泵故障	⊗ 熄灭	● 发光	🔊 发声	🟢 导通	🔴 断路
缺水报警	⊗ 熄灭	● 发光	🔊 发声	🟢 导通	🔴 断路
电路故障	⊗ 熄灭	● 发光	🔊 发声	🟢 导通	🔴 断路
供电中断	⊗ 熄灭	● 发光	🔊 发声	🟢 导通	🔴 断路

注：流量报警端口连接机内继电器一组常开、常闭触点。要求工作电流小于 5A，工作电压小于 300V。

ALARM DESCRIPTION

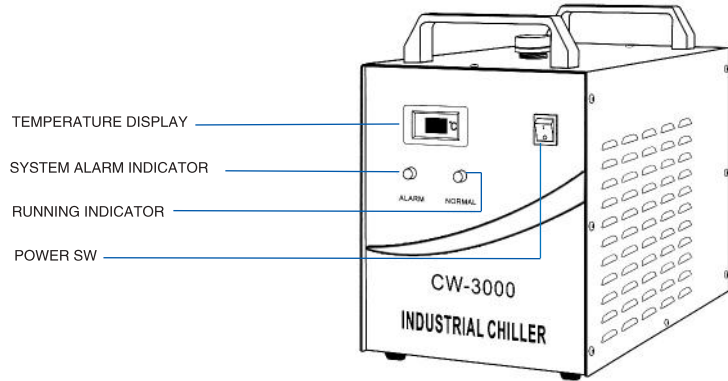
Causes of the cooling water circulation loop alarm and the working condition table

DISPLAY CONDITION	GREEN LIGHT	RED LIGHT	BUZZER	OUT H1、H2	OUT H1、H3
Normal	● On	⊗ Off	⊗ No voice	🔴 Off	🟢 On
Water stops up	⊗ Off	● On	🔊 Voice	🟢 On	🔴 Off
Surpasses 60°C	⊗ Off	● On	🔊 Voice	🟢 On	🔴 Off
Pump breakdown	⊗ Off	● On	🔊 Voice	🟢 On	🔴 Off
Alarm of water shortage	⊗ Off	● On	🔊 Voice	🟢 On	🔴 Off
Faulted circuit	⊗ Off	● On	🔊 Voice	🟢 On	🔴 Off
Power outage	⊗ Off	● On	🔊 Voice	🟢 On	🔴 Off

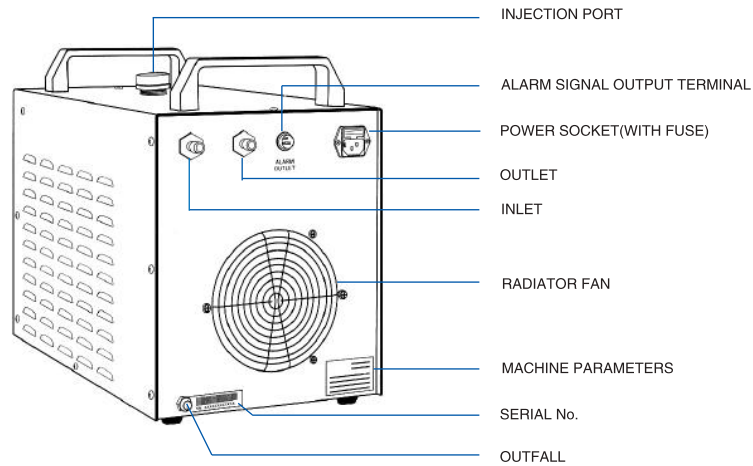
Note: The flow alarm port is connected to the normally open relay and normally closed relay contacts, requiring operating current to be less than 5A, working voltage less than 300V.

SHAPE AND PARTS NAME

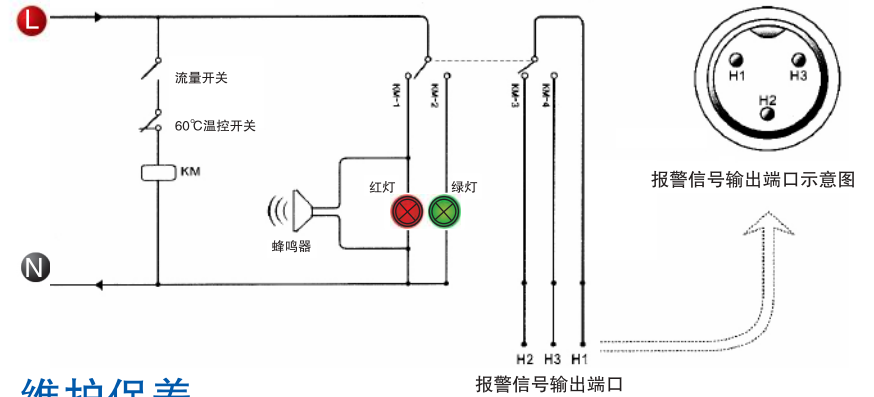
FRONT



BACK



报警功能电路图



维护保养

- 1、冷却机在长期使用后建议开盖清理灰垢，以保证散热性能良好。
- 2、北方寒冷地区应该使用无腐蚀性的防冻液。

技术参数

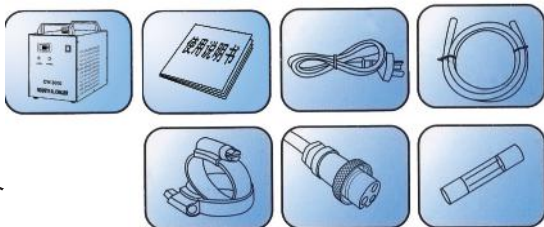
型 号	CW-3000AG	CW-3000DG	CW-3000AF	CW-3000DF	CW-3000AK	CW-3000DK
工作电压	AC220 ~ 240V	AC100 ~ 120V	AC220 ~ 240V	AC100 ~ 120V	AC220 ~ 240V	AC100 ~ 120V
工作频率	50/60Hz					
工作电流	0.45A	0.9A	0.45A	0.9A	0.5A	1.0A
散 热 量	50W/°C				60W/°C	
水箱容量	9L					
出 入 口	外径10mm 铜咀		直径8mm 快速接头		直径6mm快速接头	
最大扬程	10M				70M	
最大流量	10L/min				2L/min	
安全保护	流量报警					
净 重	9.5Kg				12Kg	
毛 重	12Kg				14.5Kg	
机器尺寸	47×27×37cm (长×宽×高)					
包装尺寸	59×39×48cm (长×宽×高)					

简单故障处理

故障现象	故障原因	处理方法
开机不通电	电源线没有插到位	把电源线插到位
	保险管熔断	更换机器后面电源接口内保险管
流量报警（面板红灯亮） 用水管直接连接出水口、 入水口，没有水流	储水箱水位太低	加水并检查管路渗漏情况
与设备连接使用时流量报警（面板 红灯亮），但用水管直接连接出水 口、入水口，有水流不报警	循环水管路堵塞	检查循环水管路
水温超高	冷水机通风不好	改善通风条件
	热负荷超标	降低热负荷或选用其它机型
开机后风扇不转	水温低于20度	正常现象，无需处理
加水或换水后开机报警	电路进水	自然晾干或开盖吹干
	水泵干转损坏	更换或维修水泵，严禁无水开机
排水口排水缓慢	注水口没有打开	打开注水口

装箱清单

- 工业循环冷水机一台
- 使用说明书一份
- 电源线一条
- 连接软管一条
- 密封箍两个
- 报警信号输出端插头一个
- 备用保险管一个
(装在电源接口备用保险管座内)



注意：本产品为工业设备，请勿让儿童玩耍！

Please read the installation instructions carefully before installing and operating and keep it properly.

This installation instructions is not a quality assurance.Manufacturer reserves the right to the interpretation of correction of typographical errors,improper mentioned information and product improvement.

The amended content will be reprinted in installation instructions without notice in advance.

CAUTION

It is strictly forbidden to plug and run the cooler without feeding water.

- ❗ Cooler should be placed in a well-ventilated,dry environment place and away from heat sources.
- ❗ Please keep at least 30cm from obstructions to the air outlet which is in the back of the cooler,and should leave at least 10cm between obstructions and air inlets of two sides.
- ❗ The cooling water must be drained if the cooler is out of use for long time or before being transported.
- ❗ To protect laser heating devices,the radiator fan of cooler will suspend to work when water temperature is lower(about 10℃), and it will restart to run when water temperature rises to higher(about 20℃).